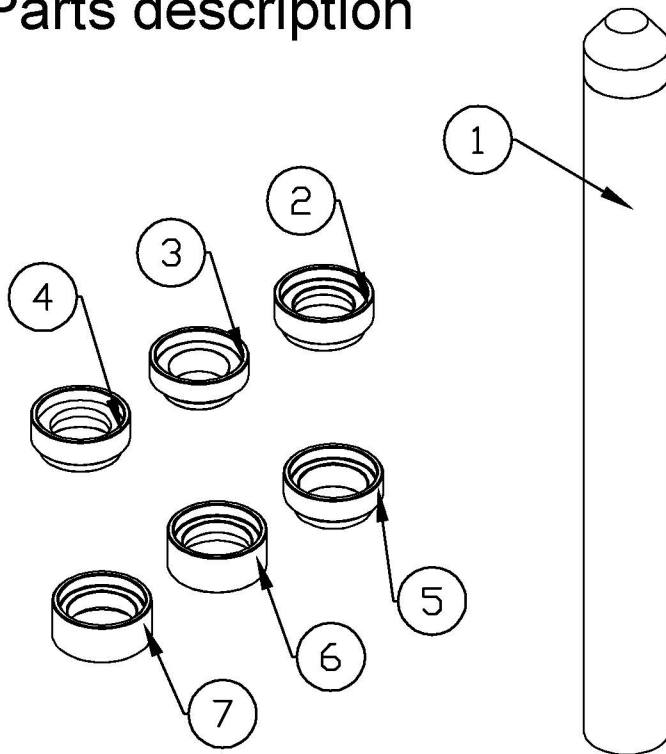
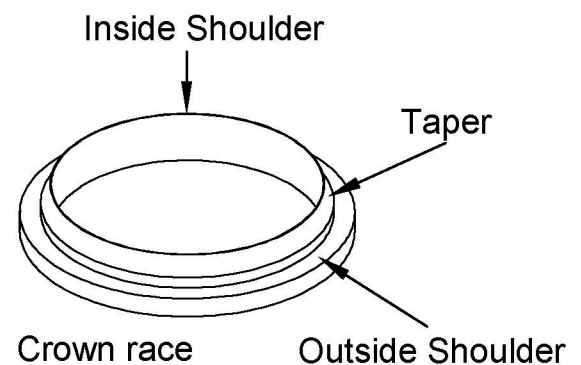


1 Parts description



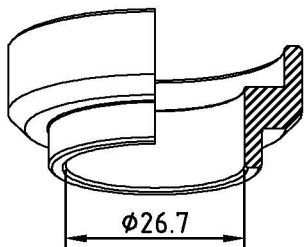
Visit operation detail at Super B
Website: <http://www.superbiketool.com/>,
Click Product ➔ Frame & Fork ➔ 2. ➔ TB-1938

NO.	PART	Q'TY
①	Driver tube	1
②	Adaptor ring 1" (TB-938A)	1
③	Adaptor ring 1" (TB-938B)	1
④	Adaptor ring 1" (TB-938C)	1
⑤	Adaptor ring 1-1/8" (TB-938D)	1
⑥	Adaptor ring 1-1/8" (TB-938E)	1
⑦	Adaptor ring 1-1/8" (TB-938F)	1

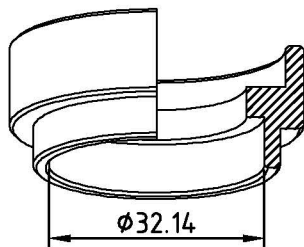


2 Instruction

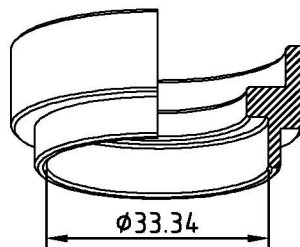
1. Must measure the outside diameter of the crown race seat on the fork and the inside diameter of the crown race before use.
2. A crown race that is 0.1mm to 0.2mm smaller than the crown race seat will create a proper press fit.
3. Select the appropriate adaptor ring and place it on the crown race.
 - 3-1. (TB-938A)(TB-938B)(TB-938C) are for 1" crown race. (TB-938A) is for inside shoulder of the crown race, (TB-938B)(TB-938C) are for outside shoulder of the crown race.
 - 3-2. (TB-938D)(TB-938E) are for 1-1/8" crown race. (TB-938D) is for the inside shoulder of the crown race, (TB-938E) is for outside shoulder of the crown race.
 - 3-3. (TB-938F) is for 1-1/8" crown race with 45° angular contact bearing.
4. Clean the crown race and the crown race seat then apply a thin layer of grease(TB-3220).
5. Place driver tube over a adaptor ring and crown race down with a PU-hammer(TB-1100).
6. Until the crown race is properly seated.



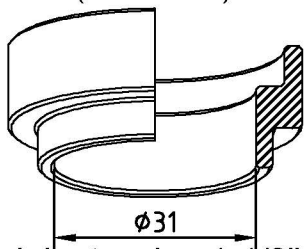
Adaptor ring 1"
(TB-938A)



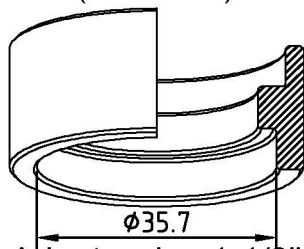
Adaptor ring 1"
(TB-938B)



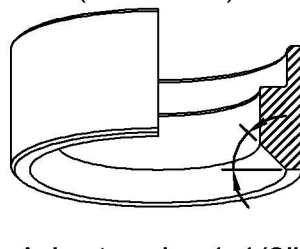
Adaptor ring 1"
(TB-938C)



Adaptor ring 1-1/8"
(TB-938D)



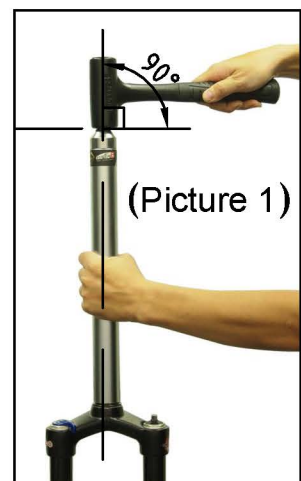
Adaptor ring 1-1/8"
(TB-938E)



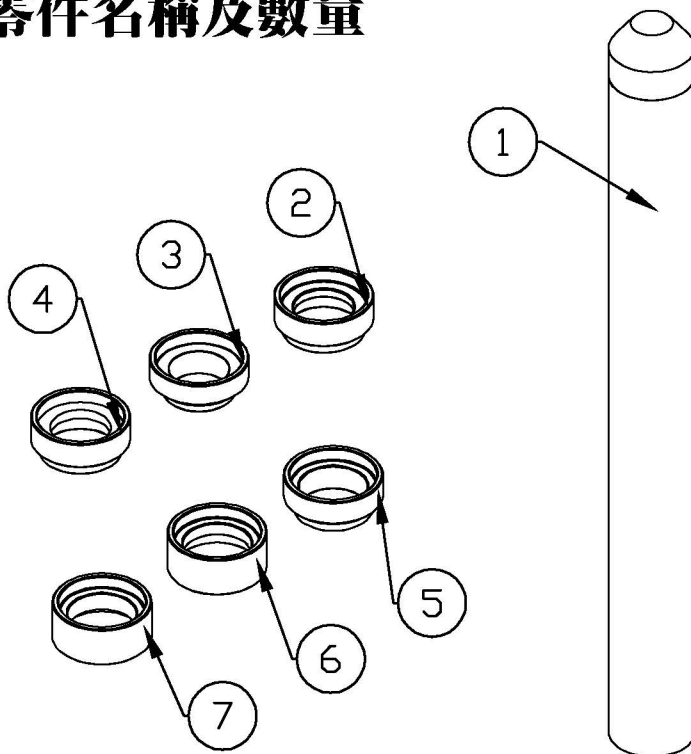
Adaptor ring 1-1/8"
(TB-938F)



Make sure the PU-hammer and driver tube are in vertical condition when knocking.

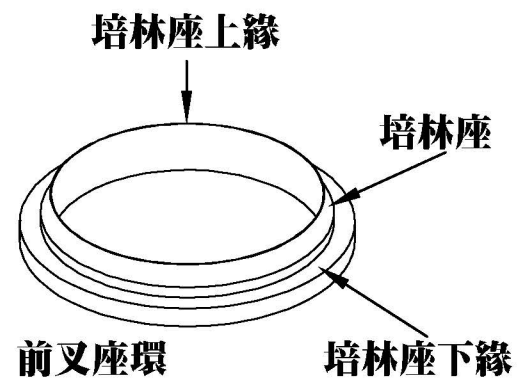


1 零件名稱及數量



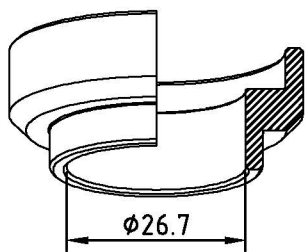
詳細操作影片請至 Super B 官網
<http://www.superbiketool.com/> 觀看，點擊
Product ➡ Frame & Fork ➡ 2. ➡ TB-1938

編號	名稱	數量
①	導引管	1
②	套環 1" (TB-938A)	1
③	套環 1" (TB-938B)	1
④	套環 1" (TB-938C)	1
⑤	套環 1-1/8" (TB-938D)	1
⑥	套環 1-1/8" (TB-938E)	1
⑦	套環 1-1/8" (TB-938F)	1

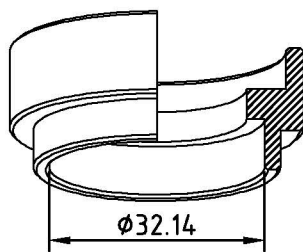


2 使用說明

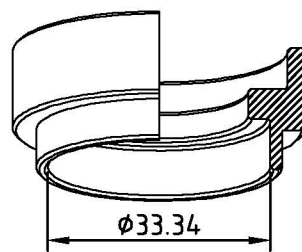
1. 使用前務必測量前叉頭碗座的外徑和前叉座環的內徑。
2. 若頭碗前叉座環的內徑小於前叉頭碗座的外徑 0.1mm到0.2mm是最適當的前叉座環壓配間距。
3. 選擇適當的套環，並將前叉座環放入確認。
 - 3-1. 套環(TB-938A)(TB-938B)(TB-938C)適用1"前叉座環，套環(TB-938A)使用於前叉座環培林座上緣，套環(TB-938B)(TB-938C)使用於前叉座環培林座下緣。
 - 3-2. 套環(TB-938D)(TB-938E)適用1-1/8"前叉座環，套環(TB-938D)使用於前叉座環培林座上緣，套環(TB-938E)使用於前叉座環培林座下緣。
 - 3-3. 套環(TB-938F)適用1-1/8"前叉座環，使用於密封式培林錐度 45°的座環。
4. 將前叉座環置入前叉，請將前叉頭碗座及前叉座環清理乾淨，再均勻塗上潤滑劑(TB-3220)。
5. 將確認後的套環置入前叉的前叉座環上。
6. 放入導引管使用膠錘(TB-1100)將前叉座環置入，直到前叉座環置入於正確的位置。



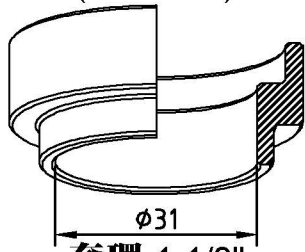
套環 1"
(TB-938A)



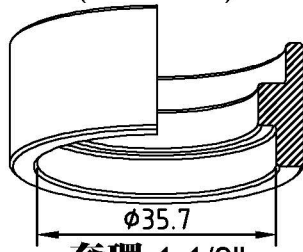
套環 1"
(TB-938B)



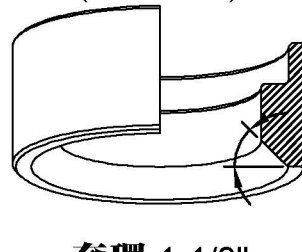
套環 1"
(TB-938C)



套環 1-1/8"
(TB-938D)



套環 1-1/8"
(TB-938E)



套環 1-1/8"
(TB-938F)

⚠ 敲擊時須確認槌子與導引管成一線

